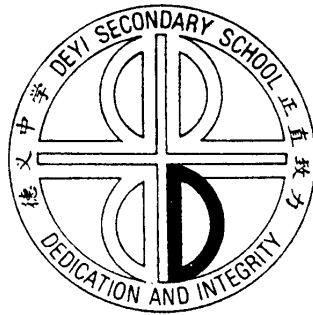


Normal (Academic)

# DEYI SECONDARY SCHOOL

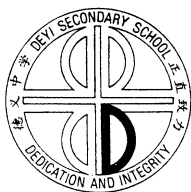


## Secondary Two Streaming 2022

Information Booklet  
for  
Normal (Academic) Stream

## Contents

<b>Title</b>	<b>Page No.</b>
Sec 3 Subject Combinations 2023	3
Synopsis of Subjects	4
FAQs	15
New Pathways for Sec 4NA Students	16
Useful Information about Post-Secondary Education	19



## Sec 3 Subject Combinations 2023

### Sec 3 Normal (Academic)

4 Compulsory Subjects	5th Subject Options	6th Subject Options
English Language	Humanities Social Studies <b>and</b> Geography (Elective) <b>or</b> History (Elective)	Art <b>or</b> Design & Technology <b>or</b> Nutrition & Food Science <b>or</b> Principles of Accounts
Mother Tongue Language		
Mathematics		
Science (Phy/Chem)		

#### Notes:

- The final subject combinations that will be offered for selection in Term 4 may differ from the options given in the above table.
- Depending on the demand, not all the above subject combinations may be offered. In general, an option will only be offered if more than 15 students opted and met the qualifications for it.

## English Language (1190)

### Synopsis of Subject

English Language is a **compulsory** subject. A pass in English Language is a requirement for post-secondary education.

Students should be able to:

- ◆ Listen, read and view critically and with accuracy, understanding and appreciation, a wide range of literary and informational/functional texts from print and non-print sources;
- ◆ Speak, write and represent in internationally acceptable English (Standard English) that is grammatical, fluent, mutually intelligible and appropriate for different purposes, audiences, contexts and cultures; and
- ◆ Understand and use internationally acceptable English (Standard English) grammar and vocabulary accurately and appropriately as well as understand how speakers/writers put words together and use language to communicate meaning and achieve impact.

The English Language curriculum aims to help students become independent lifelong learners, creative thinkers and problem solvers who can communicate effectively in English. It also equips them with the necessary skills to analyse, evaluate and respond appropriately as they acquire the essence of the English Language.

### Examination Format

There will be **four** compulsory papers for the English Language examination:

Paper	Description	Duration	Marks	Weighting
1	<b>Writing</b> Section A: Editing Section B: Situational Writing Section C: Continuous Writing	1 hr 50 min	<b>70</b> 10 30 30	<b>35%</b>
2	<b>Comprehension</b> Section A: Responding to a Visual Text Section B: Comprehension (without summary) Section C: Comprehension (with summary)	1 hr 50 min	<b>50</b> 5 20 25	<b>35%</b>
3	<b>Listening</b>	About 45 min	<b>30</b>	<b>10%</b>
4	<b>Oral Communication</b>	about 20 min	<b>30</b>	<b>20%</b>

## **Mother Tongue Languages**

**CL: 1196 ML: 1197 TL: 1198**

### **Synopsis of Subject**

Mother Tongue Language is a compulsory subject. The course focuses on training basic text comprehension skills, listening skills and oral communication skills.

Students should be able to :

Read with understanding  
Express their ideas fluently

The Mother Tongue Language curriculum aims to develop students to become competent users of their own mother tongue language. It also aim to nurture and promote students' interests and appreciation of their cultural heritage, while at the same time embracing cultural diversity.

### **Examination Format**

There are **four** compulsory papers for the Mother Tongue Language examination:

<b>Paper</b>	<b>Description</b>	<b>Duration</b>	<b>Marks</b>	<b>Weighting</b>
1	Composition	2 hr	60	30%
2	Reading Comprehension	1 hr 30 min	60	30%
3	Oral	about 15 minutes	60	30%
	Listening Comprehension	about 30 minutes	20	10%

## Mathematics Syllabus A (4045)

### Synopsis of Subject

Mathematics is a compulsory subject. A pass in Mathematics is a requirement for post-secondary education.

The course aims to enable students to:

- acquire mathematical concepts and skills for continuous learning in mathematics and to support learning in other subjects;
- develop thinking, reasoning, communication, application and metacognitive skills through a mathematical approach to problem-solving;
- connect ideas within mathematics and between mathematics and other subjects through applications of mathematics; and
- build confidence and foster interest in mathematics.

### Examination Format

Scientific calculators are allowed in both Paper 1 and Paper 2.

Paper	Description	Duration	Marks	Weighting
1	There will be about 23 short answer questions. Candidates are required to answer ALL questions.	2 hr	70	50%
2	There will be 2 sections: <ul style="list-style-type: none"> <li>• Section A will contain 9 to 10 questions of varying lengths. Candidates are required to answer ALL questions.</li> <li>• Section B will contain 2 questions of which candidates will be required to answer only one.</li> </ul>	2 hr	70	50%

**Science (Physics/Chemistry) (5105)**  
**Science (Physics/Biology) (5106)**

**Synopsis of Subject**

The subject aims to provide, through well-designed studies of experimental and practical science, a worthwhile educational experience for all students, to enable them to acquire sufficient understanding and knowledge to become confident citizens in a technological world, and be able to take or develop an informed interest in matters of scientific importance. It also aims to develop skills and attitudes that are relevant to the study and practice of science and the care for the environment. Depending on the subject combination taken, students will study relevant topics in **two** of the three science components of Physics, Chemistry or Biology.

**Examination Format**

Paper	Description	Duration	Marks	Weighting
1	Multiple Choice (Physics)	1 hr 15 min	20	20 %
2	Structured Questions (Physics)		30	30 %
3	Multiple Choice (Chemistry)	1 hr 15 min	20	20 %
4	Structured Questions (Chemistry)		30	30 %
5	Multiple Choice (Biology)	1 hr 15 min	20	20 %
6	Structured Questions (Biology)		30	30 %

**Paper 1, 3 & 5** Each of these papers consists of 20 multiple choice questions on Physics, Chemistry or Biology.

**Paper 2, 4 & 6** Each of these papers contains two sections. Section A will carry 14 marks and will contain a small number of compulsory structured questions. Section B will carry 16 marks and will contain *three* structured questions. Candidates must answer *two* out of these three questions.

**Humanities 2175/01, 2176/01**

**Social Studies (Compulsory Component)**

**Synopsis of Subject**

Humanities, a compulsory subject, comprises two components: a compulsory Social Studies component and an elective component of Geography or History.

The new Social Studies Syllabus (SS2016) content is organised around three Issues and is anchored in a set of outcomes for knowledge, skills and values. The three Issues correspond to societal issues that have been shaping Singapore society and the world. The knowledge, skills and values acquired through a study of these Issues will enable students to enrich and deploy their competencies to respond to real world issues and in the process, strengthen their values as citizens. The following shows the three Issues, each organised around an Inquiry Focus which provides a frame for students to inquire and respond to each Issue and related issues

**Issue 1: Exploring Citizenship and Governance**

*Inquiry Focus* – Working for the good of society: Whose responsibility is it?

**Issue 2: Living in a Diverse Society**

*Inquiry Focus* – Living in a diverse society: Is harmony achievable?

**Issue 3: Being Part of a Globalised World**

*Inquiry Focus* – Being part of a globalised world: Is it necessarily good?

**Examination Format**

Paper	Description	Duration	Marks	Weighting
1	<p><b><u>Section A: (35 marks)</u></b> One source-based case study (compulsory)</p> <p><b><u>Section B: (15 marks)</u></b> Structured-Response Questions</p>	1 hr 45 min	50	50%



**Humanities 2175/02**  
**Geography Elective Component**

Humanities, a compulsory subject, comprises two components: a compulsory Social Studies component and an elective component of Geography or History.

**Synopsis of Subject**

The Geography Elective highlights the interaction between the human and physical environment. It aims to help students

- Acquire knowledge of the characteristics and distribution of physical and human phenomena;
- Develop an understanding of the processes affecting the physical and human environments;
- Provide a holistic understanding of physical-human relationships;
- Develop skills in acquiring, communicating and applying geographical knowledge;
- Ask relevant geographical questions and work effectively in teams to collect geographic information from both primary and secondary sources.
- Develop an informed concern about the quality of the environment and the future of the human habitat, and thereby, enhance students' sense of responsibility for the care of the Earth and its people.

**Examination Format**

Paper	Description	Duration	Marks	Weighting
2	<p><b><u>Section A (13%)</u></b> Two structured questions on Geographical Investigations will be set based on the following topics :</p> <ul style="list-style-type: none"> <li>• Global Tourism</li> <li>• Variable Weather and Changing Climate</li> </ul> <p>One question will be set on each topic. Candidates must answer <b>one question</b> from this section.</p> <p><b><u>Section B (12%)</u></b> One structured question will be set based on the following topics:</p> <ul style="list-style-type: none"> <li>• Global Tourism</li> </ul> <p>Candidates must answer <b>one question</b> from this section. This question carries 12 marks</p> <p><b><u>Section C (25%)</u></b> Two structured questions will be set based on the following topics :</p> <ul style="list-style-type: none"> <li>• Living with Tectonic Hazards</li> <li>• Variable Weather and Changing Climate</li> </ul> <p>One question will be set based on a specific topic. One other question will be set on a combination of topics.</p>	1 hr 40 min	50	50%

**Humanities 2176/02**  
**History Elective Component**

Humanities, a compulsory subject, comprises two components: a compulsory Social Studies component and an elective component of Geography or History.

**Synopsis of Subject**

**The Making of the Contemporary World Order (1900s–1953)**

To be effective citizens and participants in the 21st century, students need to understand how the present world system came into being, and the inter-connectedness of nation-states and peoples. The revised N(A)-Level History Elective syllabus seeks to examine the key forces and developments which have shaped international history in the 20th centuries. Through this revised syllabus, history students will acquire not just conceptual tools such as balance of power, hegemony, geopolitics and nationalism, but also the historical thinking skills.

Unit 1 starts with the narrative of Europe in crisis. It examines how, in the first half of the 20th century, European rivalries erupted into two world wars and the rise of authoritarianism that challenged the governments in Europe and led to the collapse of European hegemony.

Unit 2 analyses the shift in the global balance of power from Europe to the USA and USSR at the end of WWII. This re-alignment led to the emergence of a bi-polar world dominated by ideological, geopolitical and economic competition between the two superpowers.

**Examination Format**

Paper	Description	Duration	Marks	Weighting
3	<p><b><u>Section A: (30 marks)</u></b></p> <p>One source-based case study</p> <p><b><u>Section B: (20 marks)</u></b></p> <p>Structured-essay questions Candidates answer 1 out of 3 questions.</p>	1 hr 40 min	50	50%

<b>Principles of Accounts (7086)</b>
--------------------------------------

**Prerequisites**

Preferably good grades in English and Mathematics.

**Synopsis of Subject**

Principles of Accounts (POA) syllabus is to develop in students the knowledge and skills to prepare, communicate and the use of both accounting information and non-accounting information related to the business to make decisions. This subject emphasizes on understanding and application of accounting knowledge to hone important lifelong skills.

**Examination Format**

<b>Paper</b>	<b>Description</b>	<b>Duration</b>	<b>Marks</b>	<b>Weighting</b>
1	<b><u>Structured Questions</u></b> Candidates answer 3 to 4 compulsory questions	1 hr	40	40 %
2	<b><u>Answer 4 compulsory structured questions</u></b>  One question requires the preparation of financial statements for a business for one financial year (20 marks)  A scenario-based question (5 marks) will be part of 3 remaining questions.	2 hr	60	60 %

## Design & Technology (7055)

### **Prerequisites:**

Pupils must possess the discipline and determination to engage in recurring problem-solving design activities.

Pupils must have the aptitude in 2D and 3D graphical techniques in design communication.

### **Synopsis of Subject**

The subject places great emphasis on the discipline of Design Awareness and Appreciation of function, aesthetics and technology in design. It aims to promote problem solving design activities and to develop appropriate technical and graphical skills to realize solutions in design problems. As this subject is primarily coursework-based over 8 month's duration, it demands the virtues of self-discipline, inquisition and diligence of an independent learner to sustain and engage in creative exploratory design work.

### **Framework & Content**

#### **Section 1: Design**

Design method, design conceptualisation and development skills

#### **Section 2: Technological Areas**

Mechanisms and electronics for designing and making controlled systems

#### **Section 3: Materials and Practical Processes**

Work with resistant materials and modeling materials using appropriate tools and equipment

### **Examination Format**

Paper	Description	Duration	Marks	Weighting
1	<b><u>Written Paper</u></b> Answer all 3 compulsory questions based mainly on Design process, Design contents and Technological Areas. Question 1 on Design carries 24 marks. Question 2 and 3 on Technological Questions carries 18 marks each.	1 hr 30 min	60	40 %
2	<b><u>Coursework</u></b> The coursework comprises two interrelated components namely: <b>Part A:</b> Design Journal <b>Part B:</b> Presentation Boards (A2-sized, single sided, two pieces maximum)	20 weeks	60	60 %

## Art (6125)

### Prerequisites

Students must be keen in exploring creative use of material, techniques and technologies to generate ideas and create artworks.

### Synopsis of Subject

The Art syllabus offers a balance Art curriculum through Studio Practice and the Study of Visual Arts. It emphasises the development of visual literacy through art making and the acquisition of visual critique skills. Students engage in activities of observing and recording, analysing and exploring, thinking and feeling as well as critical appraisal of artists and artworks. Students will hone their artistic skills and learn critical thinking and process skills that allow them to conceptualise and communicate ideas.

Art is a journey of discovery where students test new concepts, raise questions, work out problems and invent solutions. The aims of the syllabus are to:

- nurture an informed awareness and appreciation of visual art;
- enhance ability to identify and solve problems creatively in visual and tactile forms;
- develop competency in the use of art and design principles, materials and processes;
- foster self-confidence and a sense of achievement through the practice of visual art;
- cultivate an inquiring mind, a spirit of experimentation and a passion for visual art.

### Examination Format

Paper	Description	Duration	Marks	Weighting
Paper 1 Coursework	One Coursework unit comprising the finished artwork and not more than <b>five</b> A2 sheets of preliminary / supporting studies that include the explorations of artists/artworks relevant to the chosen theme / media.	7 months	100	60 %
Paper 2 Drawing and Painting	Six themes will be issued and candidates are to make a response to <b>one</b> of the themes on paper of size A3 or A2. Preliminary / supporting studies of <b>three to five</b> A3 sheets of paper must be submitted.	3 hr	100	40 %

## Nutrition and Food Science (6073)

### Prerequisites

Students must show interest in planning and conducting food science experiments and have the diligence and determination to see through the coursework.

### Synopsis of Subject

Nutrition and Food Science aims to develop students to:

- apply concepts in nutrition and health, food literacy and principles of food science.
- advocate sustainable food consumption by planning and making informed food choices.
- apply principles of culinary science creatively in food preparation and cooking.

### Examination Format

Paper	Description	Duration	Marks	Weighting
1	<p><b><u>Written paper</u></b></p> <p>This paper will test the candidates' knowledge of theory and practice in response to the assessment objectives.</p> <p>Section A: Multiple Choice Question (16 marks)            Section B: Data-Response/Short Answer (40 marks)            Section C: Open-ended Questions (24 marks)</p>	1 hr 30 min	80	40%
2	<p><b><u>Coursework</u></b></p> <p>Candidates will be required to submit a 20-page coursework based on a task question which will be released at the beginning of the year. The coursework must be completed by July.</p> <p>Student are required to perform research linked to the task question, followed by plan, execute and evaluate dishes that are appropriate for the task question, with detailed justification and relevant food science knowledge.</p> <p>The coursework will also require candidates to plan and execute a food science experiment related to the task question, analyze its results using food science knowledge and apply these results back to the coursework task.</p>	25 hours	60	60%

**FREQUENTLY ASKED QUESTIONS (FAQs)**

**Q1** What is the main criterion for streaming?

**Ans** Streaming is based on merit. The main criterion for streaming is academic results.

**Q2** If I am unsuccessful in first choice subject combination, how does it affect my chances of getting the second choice?

**Ans** It does NOT affect your chances of getting into your second choice. Streaming is based on merit; the best students get streamed into their preferred choice first.

**Q3** Must I be a SBB student in order to take English, Math or Science at "O" Level?

**Ans** Both SBB and non-SBB students may apply to take English, Math or Science at "O" Level.

**Q4** What are the criteria for promotion from Sec 4NA to Sec 5NA?

**Ans** Students will need to obtain a pass in EL and Mathematics. The combined aggregate for EL-Math-Best 3 must be 19 or below.

**Q5** Can I use CCA points to gain admission to a JC?

**Ans** Only students who are *eligible* for JC admission, ie  $L1R5 \leq 20$  points, may use CCA bonus points. Students with an 'A' grade in CCA enjoy 2 bonus points, while those with a 'B' or 'C' grade enjoy 1 bonus point.

**Q6** Can I use CCA points to gain admission to Millennia Institute (3-year Pre-U Centre)?

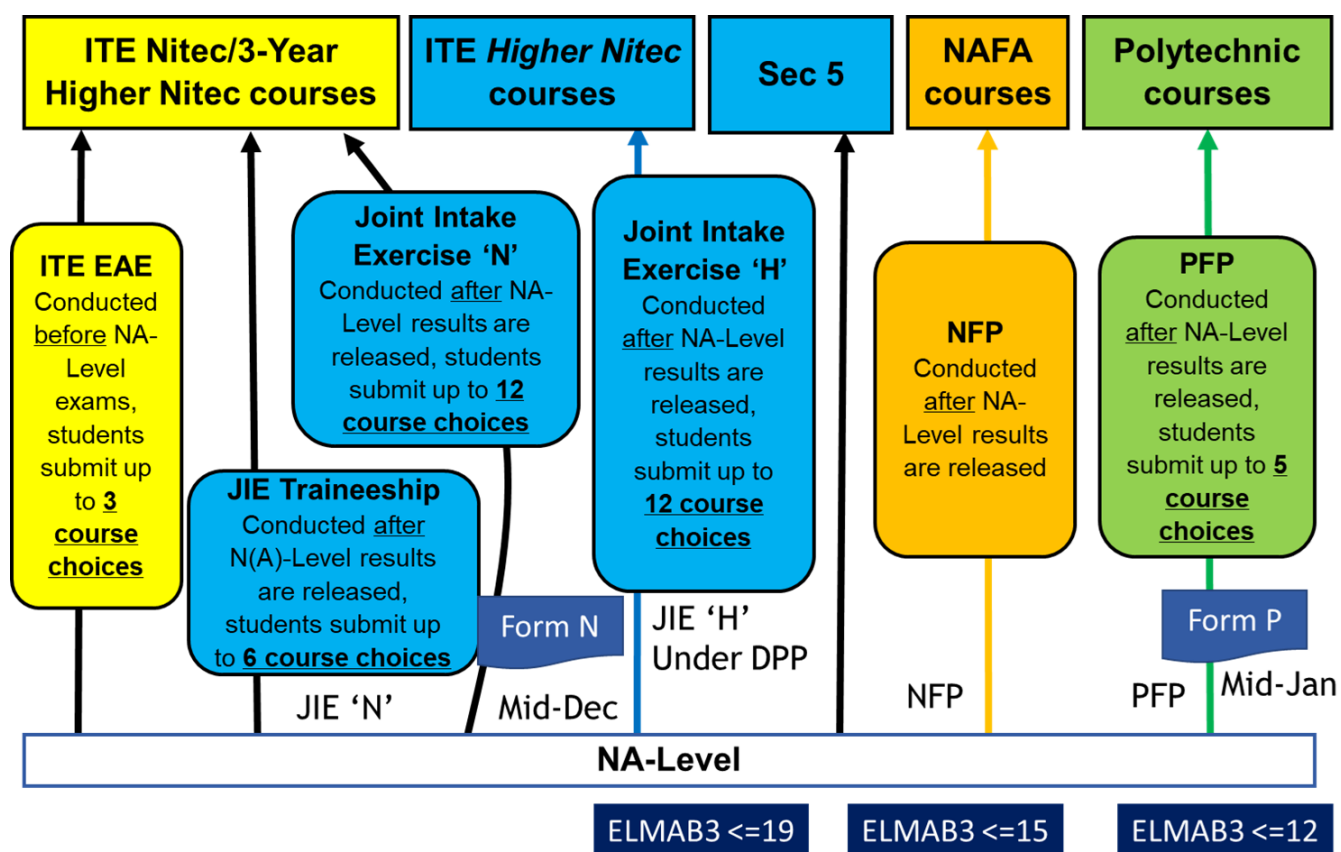
**Ans** To be eligible for admission, students must obtain not obtain more than 20 points in their L1R4. CCA may be used as one of the subjects for the calculation of L1R4.

**Q7** I am interested in studying a life science course in the Polytechnic? Is Biology compulsory?

**Ans** Any Science subject will do.

**Q8** I am interested in studying an Engineering Course in the University. Is Physics compulsory?

**Ans** Physics is important in all engineering programs.

**NEW PATHWAYS FOR SEC 4NA STUDENTS****NEW PATHWAY: POLYTECHNIC FOUNDATION COURSE (PFP)****Introduction**

Caters to top 15% of Sec 4N(A) students  
More than 70% of Poly Diploma courses will be offered

**Eligibility**

ELMAB3 ≤ 12 (excluding CCA points) and  
EL ≤ 2 or 3 (depending on course)  
MA ≤ 3  
Relevant subject ≤ 3  
B2 subjects ≤ 4 (NEW)

**Progression to Polytechnics**

Students who pass **all** modules in Foundation Programme (FP) and hence successfully completed FP will be admitted into first year of pre-selected polytechnic courses



## **NEW PATHWAY: DIRECT ENTRY SCHEME TO POLYTECHNIC (DPP)**

### **Introduction**

DPP to Poly builds on ITE Direct Entry Scheme (DES) introduced in 2008

Caters to top 10<sup>th</sup> percentile to 30<sup>th</sup> percentile of 4N(A)

Doubling the number of places to 1000 students who meet the qualifying GPA in Higher Nitec programme will be assured of **either a first year or second year** place in related Polytechnic Diploma course

### **Eligibility Criteria**

ELMAB3  $\leq$  19 (excluding CCA pts) and

EL  $\leq$  3 (depending on course)

MA  $\leq$  4

B3  $\leq$  5

### **Progression to Polytechnics**

To be assured of place in Poly Diploma course related to Higher Nitec DES programme, the following Grade Point Average (GPA) criteria must be met:

#### ***Applied Sciences, Engineering or Info-communications technology Higher Nitec DES prog***

ITE raw GPA of 2.5 pts (excluding CCA bonus pts) – 1<sup>st</sup> year place

ITE raw GPA of 3.5 pts (excluding CCA bonus pts) – 2<sup>nd</sup> year place

#### ***Business & Services Higher Nitec DES prog***

ITE raw GPA of 3.0 pts (excluding CCA bonus pts) – 1<sup>st</sup> year place

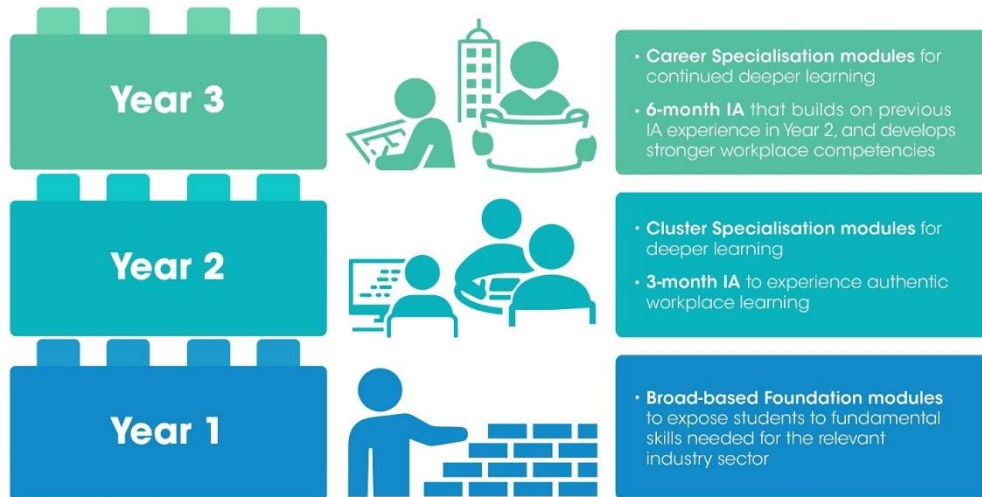
CCA bonus pts used for computing the ITE net GPA for selection & posting to Poly Diploma Course



Ministry of Education  
SINGAPORE

## 3-YEAR PATHWAY LEADING TO **HIGHER NITEC**

*Streamlined curriculum and integrated Industry Attachments (IA)  
for deeper work-ready skills and future upgrading*



ITE will adopt a phased implementation approach from AY2022 starting with eight courses: Accounting, Business Information Systems, Cyber & Network Security, Electronics Engineering, IT Applications Development, IT Systems & Networks, Security System Integration and Sport Management.

For more information, visit [www.go.gov.sg/ite-curricular-structure](http://www.go.gov.sg/ite-curricular-structure)

**USEFUL INFORMATION ABOUT POST-SECONDARY EDUCATION**  
**(extracted from Joint Admission Exercise (JAE) Booklet)**

S/No	Type of Bonus Points	No. of Bonus Points Available	Maximum Bonus Points Allowable	
1	For students seeking admission to JC/Poly/ITE and with the following CCA grades: a. Grades of A1 – A2 b. Grades of B3 – C6	2 points 1 point	Limited to a maximum of <u>4 Bonus Points</u> only for these 4 sections.	Limited to a maximum of <u>6 Bonus Points</u> only.
2	For students seeking admission to JC/MI courses and with grades of A1 to C6 in both their first languages (i.e. English and a Higher Mother Tongue). This is provided that these choices come before any Poly/ITE choices.	2 points		
3	For students seeking admission to JC/MI courses and with grades of A1 to C6 in Malay/Chinese (Special Programme) (MSP/CSP) or Bahasa Indonesia (BI) as their third language. This is provided that these choices come before any Poly/ITE choices.	2 points		
4	For students from feeder schools if they choose their affiliated Junior College course(s) as their: a. 1 <sup>st</sup> choice, <u>or</u> b. 1 <sup>st</sup> and 2 <sup>nd</sup> choices.	2 points		
5	For students who have applied for the CLEP or MLEP and have been selected for the programme.	2 points	2 Bonus Points	

**COMPUTATION OF AGGREGATES (ELR2B2) FOR POLYTECHNIC COURSES**

Aggregate Type		ELR2B2 : For Polytechnic Courses			
		ELR2B2 -A	ELR2B2-B	ELR2B2-C	ELR2B2-D
<b>EL</b>		English			
<b>R2</b>	1st Group of Relevant Subjects	Art/Art & Design Business Studies Combined Humanities Commerce Commercial Studies Economics Geography Higher Art Higher Music History Humanities (Social Studies, Literature in English) Humanities (Social Studies, Literature in Chinese) Humanities (Social Studies, Literature in Malay) Humanities (Social Studies, Literature in Tamil) Humanities (Social Studies, History) Humanities (Social Studies, Geography) Intro to Enterprise Development Literature in English Literature in Chinese Literature in Malay Literature in Tamil Media Studies (English) Media Studies (Chinese) Music		Elementary Mathematics Additional Mathematics	
	2nd Group of Relevant Subjects	Additional Mathematics Art/Art & Design Business Studies Chinese Combined Humanities Commerce Commercial Studies Creative 3D Animation Design & Technology Design Studies Economics Elementary Mathematics Food & Nutrition Geography Higher Art Higher Chinese Higher Malay Higher Music Higher Tamil History Humanities (Social Studies, Literature in English) Humanities (Social Studies, Literature in Chinese) Humanities (Social Studies, Literature in Malay) Humanities (Social Studies, Literature in Tamil) Humanities (Social Studies, History) Humanities (Social Studies, Geography) Intro to Enterprise Development Literature in English Literature in Chinese Literature in Malay Literature in Tamil Malay Media Studies (English) Media Studies (Chinese) Music Principles of Accounts Tamil	Art/Art & Design Business Studies Combined Humanities Commerce Commercial Studies Economics Geography Higher Art Higher Music History Humanities (Social Studies, Literature in English) Humanities (Social Studies, Literature in Chinese) Humanities (Social Studies, Literature in Malay) Humanities (Social Studies, Literature in Tamil) Humanities (Social Studies, History) Humanities (Social Studies, Geography) Intro to Enterprise Development Literature in English Literature in Chinese Literature in Malay Literature in Tamil Media Studies (English) Media Studies (Chinese) Music Principles of Accounts	Add <sup>a</sup> Combined Science Additional Science Biology Biotechnology Chemistry Combined Science Computing/Computer Studies Creative 3D Animation Design & Technology Food & Nutrition Electronics/Fundamentals of Electronics General Science Human & Social Biology Integrated Science Physics/Engineering Science Science (Chem, Bio) Science (Phy, Bio) Science (Phy, Chem)/Physical Science Science (Phy, Chem, Bio)	Add <sup>a</sup> Combined Science Additional Science Art/Art & Design Biology Biotechnology Chemistry Combined Science Computing/Computer Studies Creative 3D Animation Design & Technology Design Studies Food & Nutrition Electronics/Fundamentals of Electronics General Science Higher Art Human & Social Biology Integrated Science Media Studies (English) Media Studies (Chinese) Physics/Engineering Science Science (Chem, Bio) Science (Phy, Bio) Science (Phy, Chem)/Physical Science Science (Phy, Chem, Bio)
<b>B2</b>		Best 2 other subjects			

**SINGAPORE POLYTECHNIC 2022 JAE ELR2B2 RANGE**

Course	2022 Planned Intake	Range of Net 2022 JAE ELR2B2
<b>APPLIED SCIENCES</b>		
Applied Chemistry (S64)	100	5 to 9
Biomedical Science (S98)	100	3 to 7
Chemical Engineering (S70)	120	5 to 13
Food Science & Technology (S47)	105	5 to 13
Perfumery & Cosmetic Science (S38)	50	5 to 11
<b>BUILT ENVIRONMENT</b>		
Architecture (S66)	95	5 to 13
Civil Engineering (S68)	120	7 to 20
Facilities Management (S95)	75	11 to 19
Integrated Events & Project Management (S50)	100	5 to 16
Landscape Architecture (S94)	40	8 to 15
<b>BUSINESS MANAGEMENT</b>		
Accountancy (S75)	100	3 to 12
Banking & Finance (S76)	80	6 to 12
Business Administration (S71)	120	4 to 12
Common Business Programme (S31)	205	4 to 12
Human Resource Management with Psychology (S48)	100	5 to 12
<b>ENGINEERING</b>		
Aeronautical Engineering (S88)	180	5 to 17
Aerospace Electronics (S90)	90	7 to 13
Common Engineering Programme (S40)	340	7 to 17
Computer Engineering (S53)	215	3 to 12
Electrical & Electronic Engineering (S99)	220	6 to 17
Engineering with Business (S42)	60	5 to 11
Mechanical Engineering (S91)	180	4 to 17
Mechatronics & Robotics (S73)	75	5 to 13
<b>HEALTH SCIENCES</b>		
Optometry (S67)	60	6 to 12
<b>INFORMATION &amp; DIGITAL TECHNOLOGIES</b>		
Applied AI & Analytics (S30)	80	3 to 8
Common ICT Programme (S32)	165	3 to 13
Infocomm Security Management (S54)	120	4 to 11
Information Technology (S69)	160	4 to 14
<b>MARITIME STUDIES</b>		
Marine Engineering (S63)	115	7 to 22
Maritime Business (S74)	120	7 to 18
Nautical Studies (DNS)	40	Offered under DAE
<b>MEDIA AND DESIGN</b>		
Interior Design (S89)	60	4 to 14
Media, Arts & Design (S29)	414	4 to 12

(Source: <https://www.sp.edu.sg/sp/admissions/admissions-exercises/admission-criteria/course-intake-and-jae-elr2b2>)